



ERCOT Grid Operations

Wind Integration Report : 08/06/2021

Current Daily Values:

Installed Wind Capacity*	32,244 MW
Total Wind Capacity**	34,181 MW
Peak Load	66,499 MW
Peak Load Hour (HE)	16
Wind at Peak Load Hour	4,334 MW

Max Wind	19,295 MW
Max Wind Time	23:59
Penetration at Max Wind Time	39.03 %

Max Wind Penetration	39.05 %
Max Wind Penetration Time	23:59
Wind Generation at Max Wind Penetration Time	19,292 MW

All Time Record Values:

Record Wind Generation	23,596 MW
Record Wind Generation Time	06/25/2021 22:32
Penetration at Record Wind Generation Time	40.66 %

Record Wind Penetration	66.47 %
Record Wind Penetration Time	03/22/2021 00:46
Wind Generation at Record Wind Penetration	20,986 MW

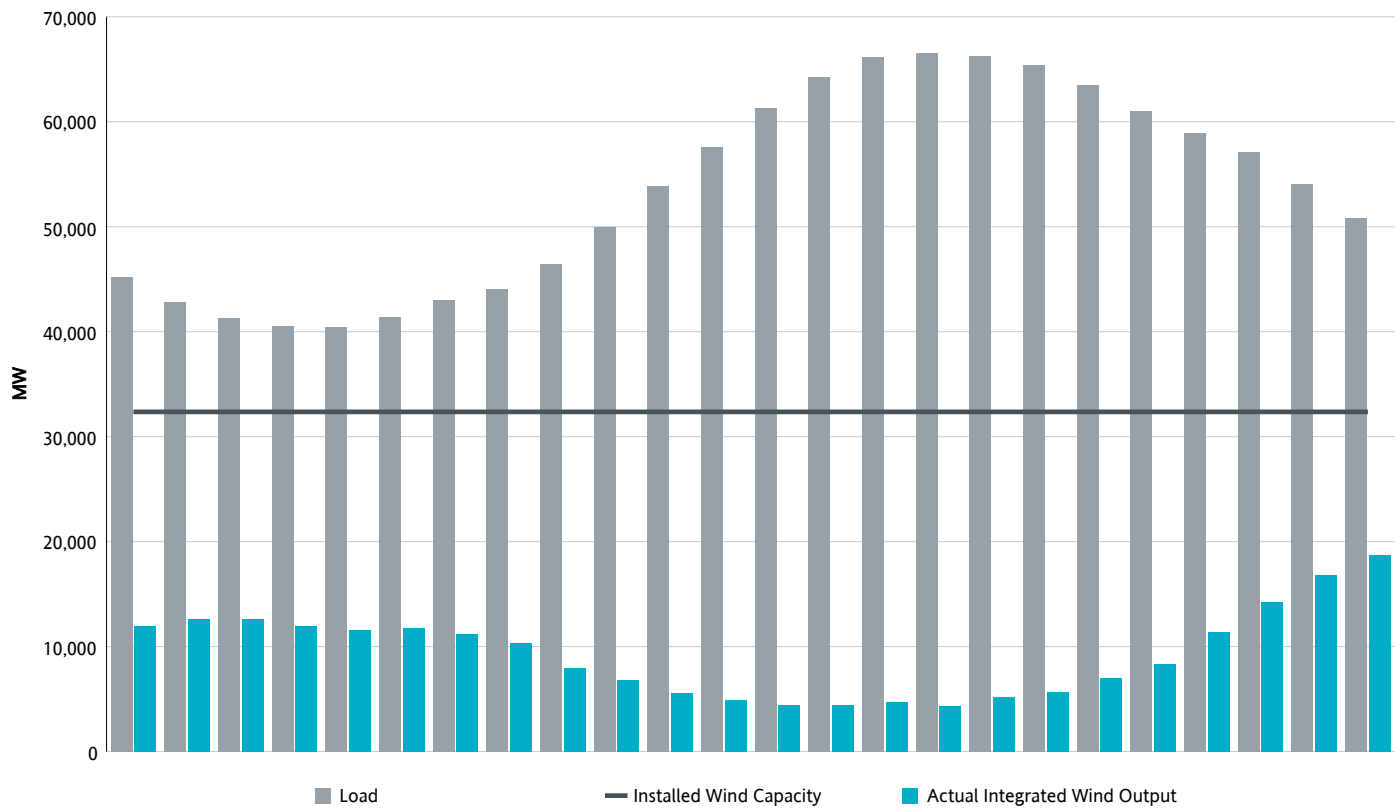
*Sum of maximum capacity (i.e. seasonal max. reasonability limit in RARF) of all WGRs that are modeled in ERCOT's Network Operations Model and are commercially operable (estimated based on Commercial Operations Date in RARF).

**Sum of maximum capacity (i.e. seasonal max reasonability limit in RARF) of all WGRs that are modeled in ERCOT's Network Operations Model.

Note that actual WGR Generation, WGR Record and WGR Capacity in following pages of this report are based on all Wind units modeled in ERCOT's Network Operations Model.

Hourly Average Actual Load vs. Actual Wind Output

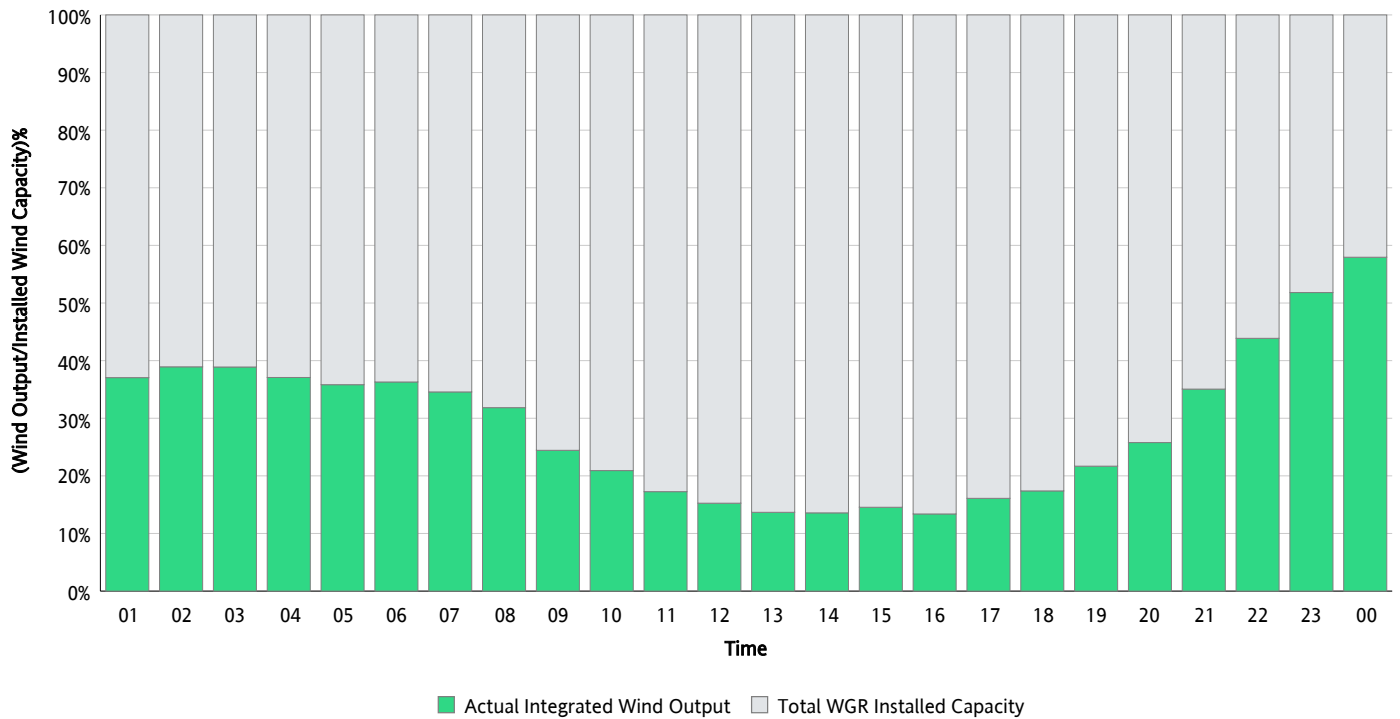
08/06/2021



** Wind Record and Wind Max represent instantaneous values and the rest of the values are integrated over the hour.
Capacity numbers used in the graphs are based on the expected commercial operation date of each Wind Generation Resource.*

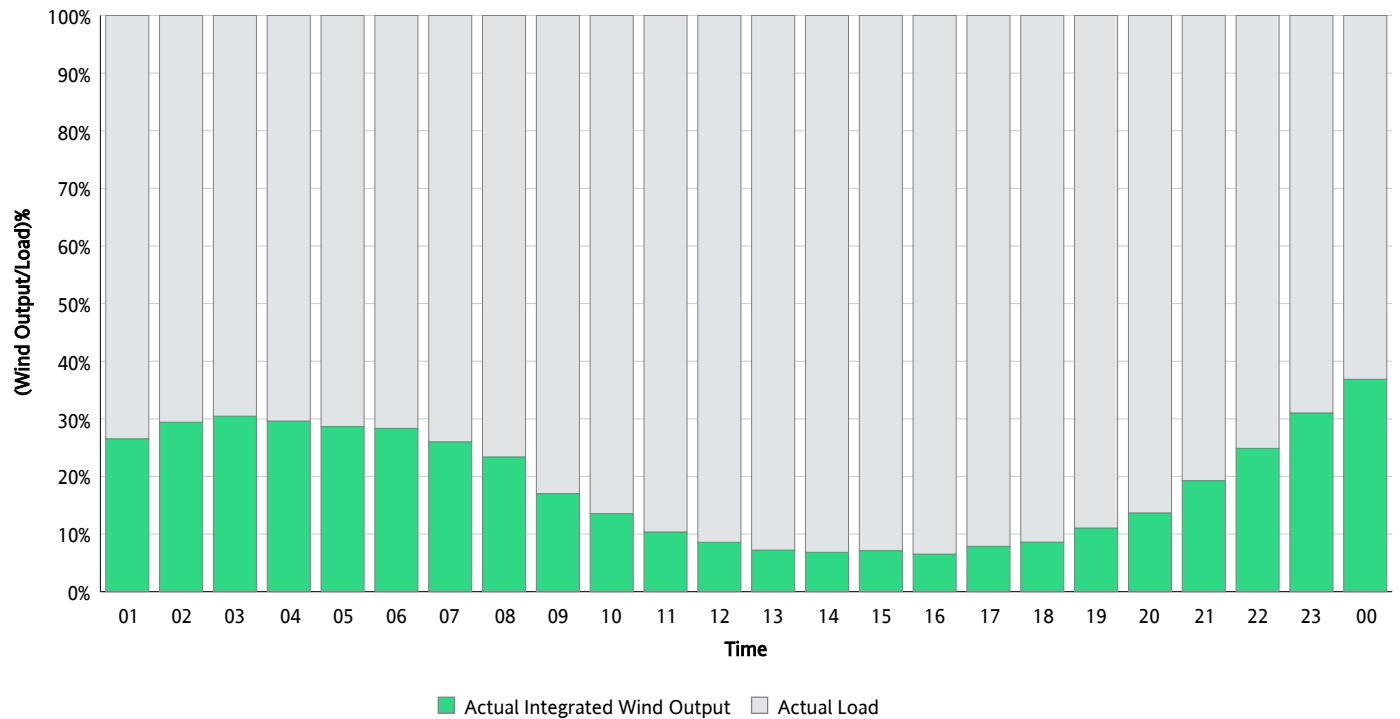
Actual Wind Output as a Percentage of the Total Installed Wind Capacity

08/06/2021



Actual Wind Output as a Percentage of the ERCOT Load

08/06/2021



ERCOT Load vs. Actual Wind Output

07/30/2021 - 08/06/2021

