



## ERCOT Grid Operations

### Wind Integration Report : 03/31/2021

#### Current Daily Values:

Installed Wind Capacity*	31,924 MW
Total Wind Capacity**	32,076 MW
Peak Load	41,086 MW
Peak Load Hour (HE)	12
Wind at Peak Load Hour	16,025 MW

Max Wind	20,869 MW
Max Wind Time	01:36
Penetration at Max Wind Time	61.69 %

Max Wind Penetration	63.09 %
Max Wind Penetration Time	02:39
Wind Generation at Max Wind Penetration Time	20,504 MW

#### All Time Record Values:

Record Wind Generation	22,893 MW
Record Wind Generation Time	01/14/2021 07:27
Penetration at Record Wind Generation Time	45.45 %

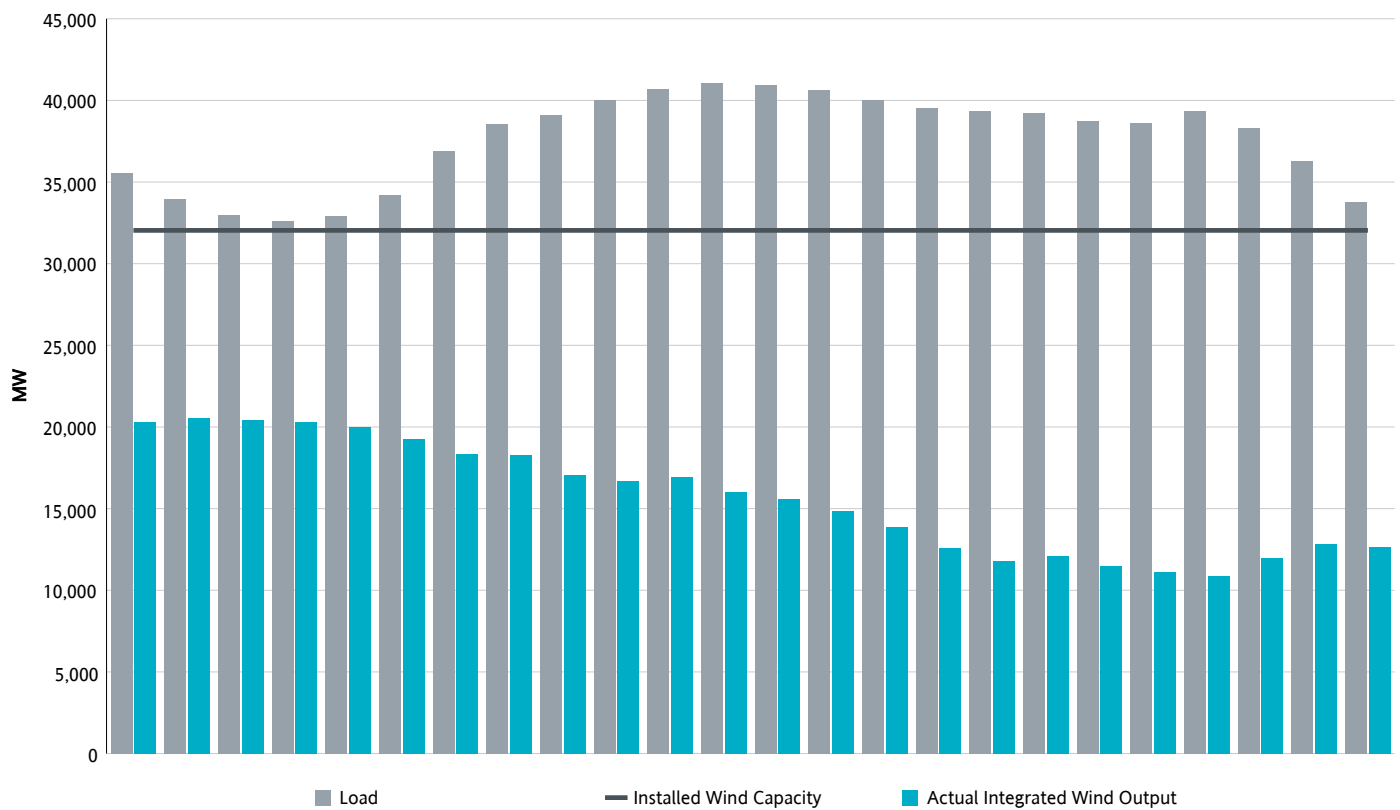
Record Wind Penetration	66.47 %
Record Wind Penetration Time	03/22/2021 00:46
Wind Generation at Record Wind Penetration	20,986 MW

\*Sum of maximum capacity (i.e. seasonal max. reasonability limit in RARF) of all WGRs that are modeled in ERCOT's Network Operations Model and are commercially operable (estimated based on Commercial Operations Date in RARF).

\*\*Sum of maximum capacity (i.e. seasonal max reasonability limit in RARF) of all WGRs that are modeled in ERCOT's Network Operations Model.

Note that actual WGR Generation, WGR Record and WGR Capacity in following pages of this report are based on all Wind units modeled in ERCOT's Network Operations Model.

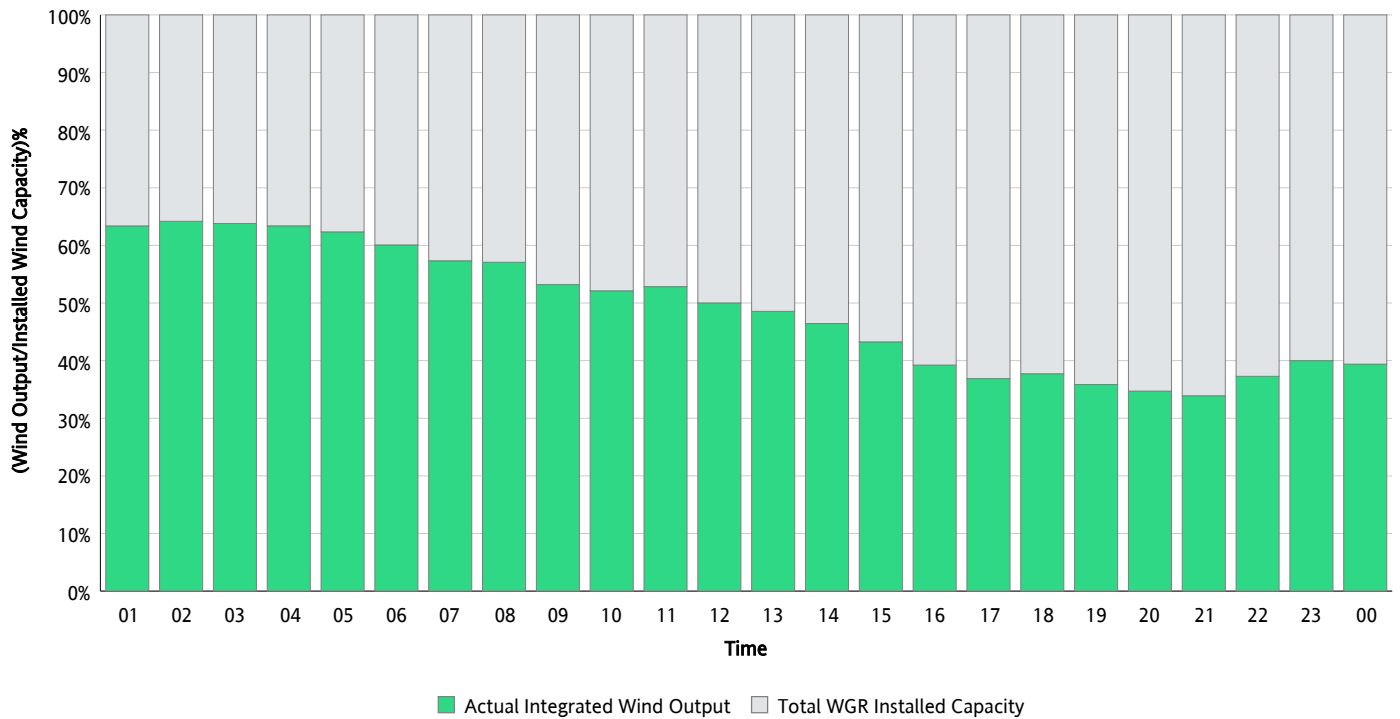
## Hourly Average Actual Load vs. Actual Wind Output 03/31/2021



\* Wind Record and Wind Max represent instantaneous values and the rest of the values are integrated over the hour.  
Capacity numbers used in the graphs are based on the expected commercial operation date of each Wind Generation Resource.

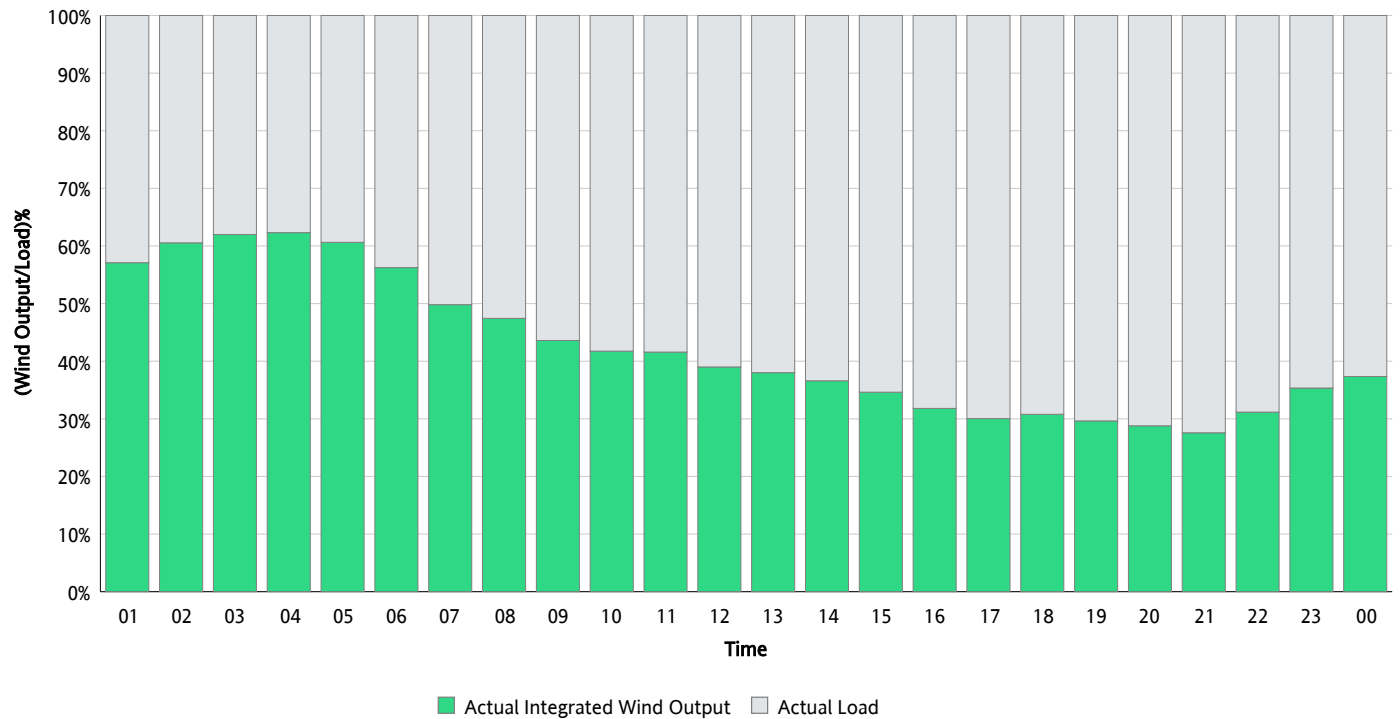
## Actual Wind Output as a Percentage of the Total Installed Wind Capacity

03/31/2021



## Actual Wind Output as a Percentage of the ERCOT Load

03/31/2021



# ERCOT Load vs. Actual Wind Output

## 03/24/2021 - 03/31/2021

