



ERCOT Grid Operations

Wind Integration Report : 03/19/2021

Current Daily Values:

Installed Wind Capacity*	31,924 MW
Total Wind Capacity**	32,076 MW
Peak Load	40,788 MW
Peak Load Hour (HE)	9
Wind at Peak Load Hour	6,023 MW

Max Wind	9,745 MW
Max Wind Time	00:01
Penetration at Max Wind Time	28.79 %

Max Wind Penetration	29.54 %
Max Wind Penetration Time	00:53
Wind Generation at Max Wind Penetration Time	9,684 MW

All Time Record Values:

Record Wind Generation	22,893 MW
Record Wind Generation Time	01/14/2021 07:27
Penetration at Record Wind Generation Time	45.45 %

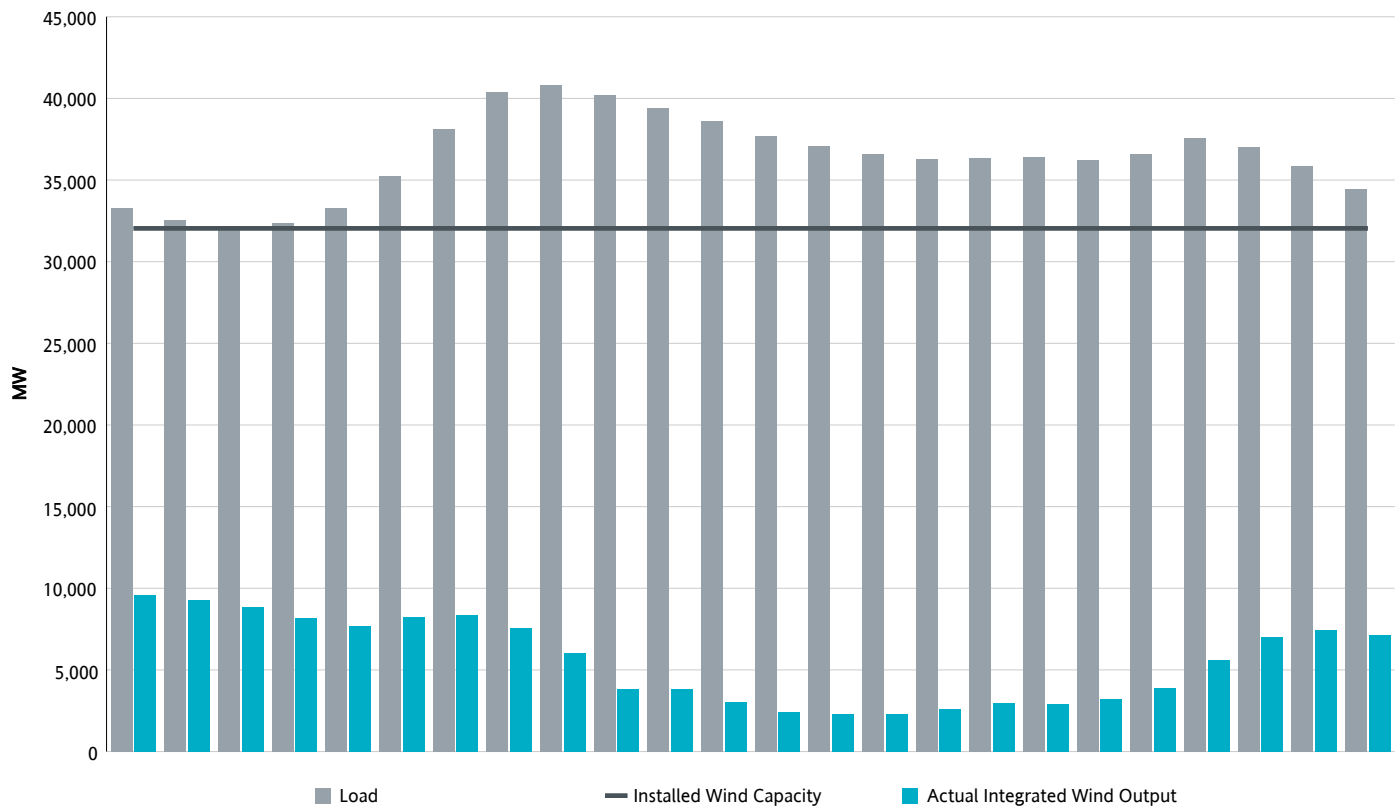
Record Wind Penetration	60.40 %
Record Wind Penetration Time	01/30/2021 07:54
Wind Generation at Record Wind Penetration	22,091 MW

*Sum of maximum capacity (i.e. seasonal max. reasonability limit in RARF) of all WGRs that are modeled in ERCOT's Network Operations Model and are commercially operable (estimated based on Commercial Operations Date in RARF).

**Sum of maximum capacity (i.e. seasonal max reasonability limit in RARF) of all WGRs that are modeled in ERCOT's Network Operations Model.

Note that actual WGR Generation, WGR Record and WGR Capacity in following pages of this report are based on all Wind units modeled in ERCOT's Network Operations Model.

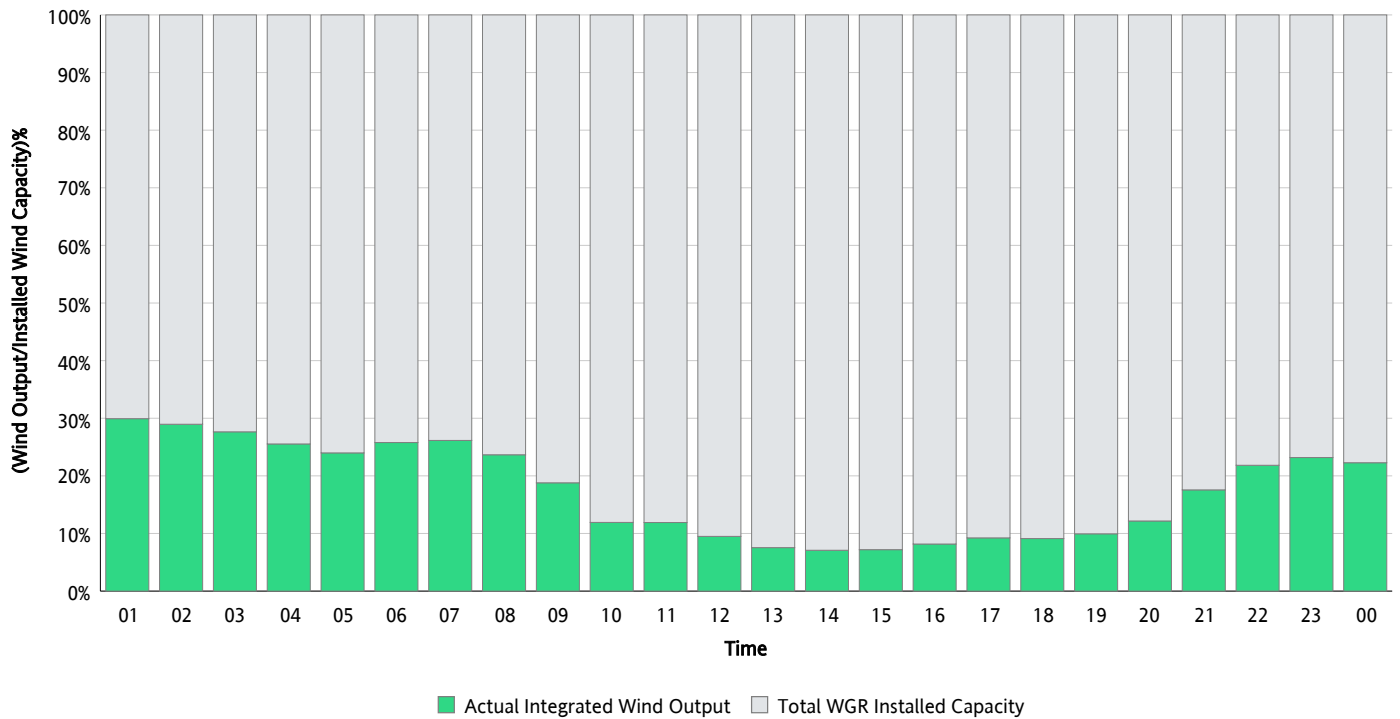
Hourly Average Actual Load vs. Actual Wind Output 03/19/2021



* Wind Record and Wind Max represent instantaneous values and the rest of the values are integrated over the hour.
Capacity numbers used in the graphs are based on the expected commercial operation date of each Wind Generation Resource.

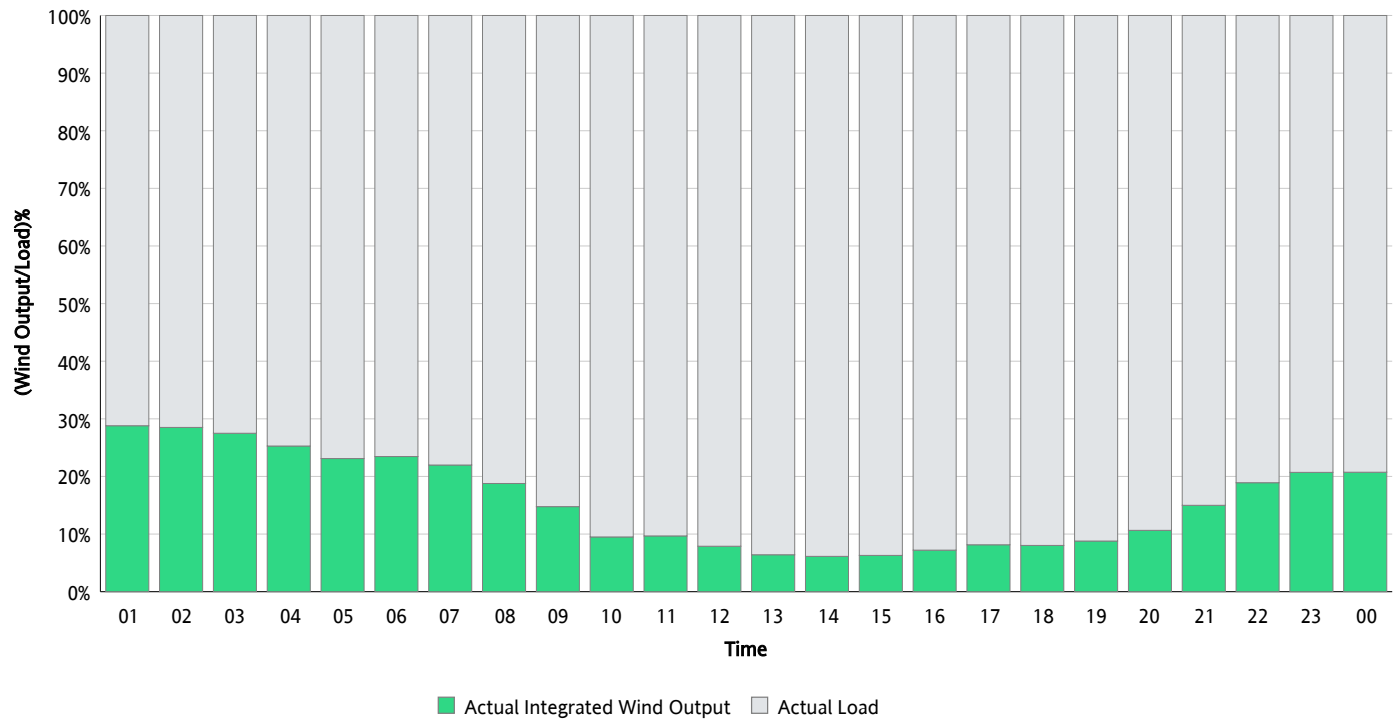
Actual Wind Output as a Percentage of the Total Installed Wind Capacity

03/19/2021



Actual Wind Output as a Percentage of the ERCOT Load

03/19/2021



ERCOT Load vs. Actual Wind Output

03/12/2021 - 03/19/2021

