



## ERCOT Grid Operations

### Wind Integration Report : 02/18/2021

#### Current Daily Values:

Installed Wind Capacity*	31,847 MW
Total Wind Capacity**	32,076 MW
Peak Load	55,426 MW
Peak Load Hour (HE)	11
Wind at Peak Load Hour	6,634 MW

Max Wind	7,080 MW
Max Wind Time	11:48
Penetration at Max Wind Time	12.87 %

Max Wind Penetration	13.93 %
Max Wind Penetration Time	14:53
Wind Generation at Max Wind Penetration Time	7,033 MW

#### All Time Record Values:

Record Wind Generation	22,893 MW
Record Wind Generation Time	01/14/2021 07:27
Penetration at Record Wind Generation Time	45.45 %

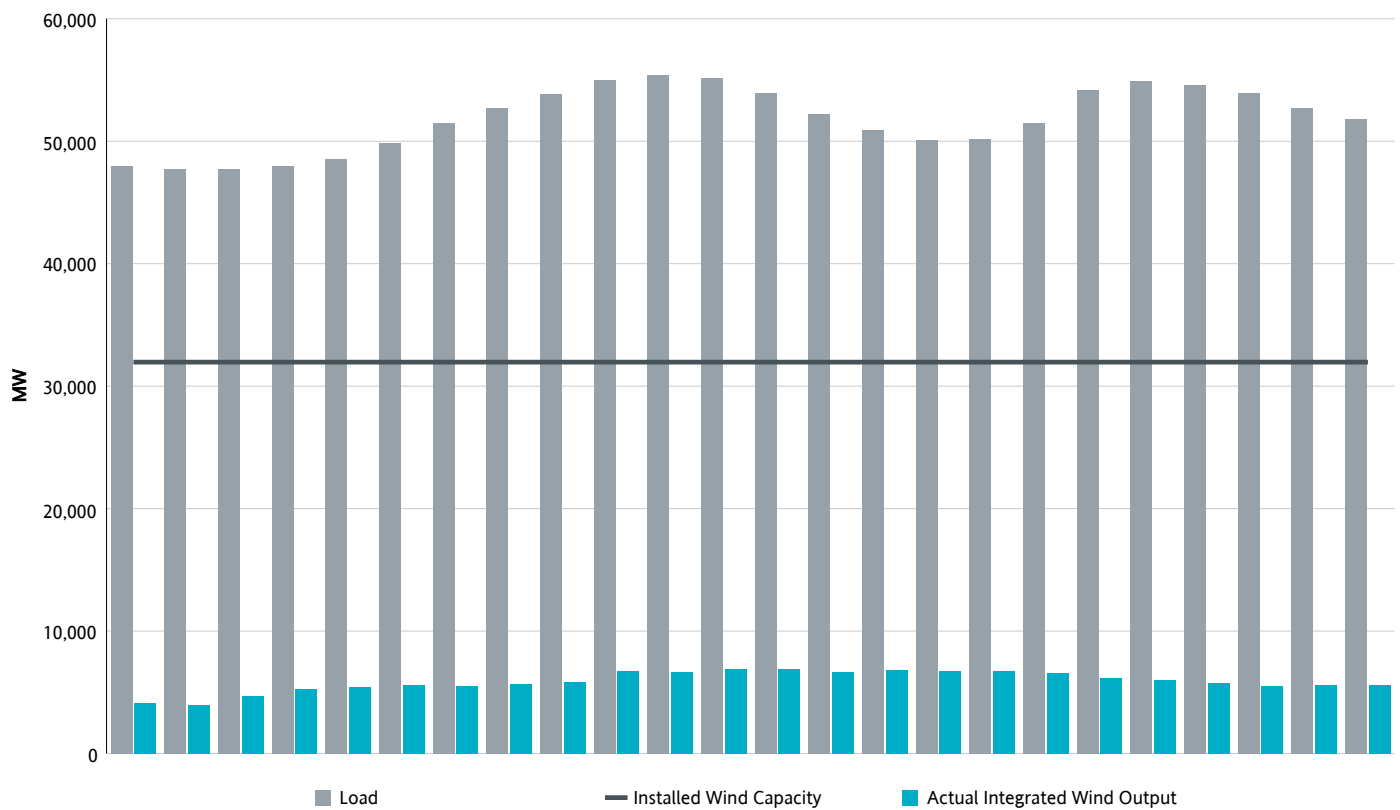
Record Wind Penetration	60.40 %
Record Wind Penetration Time	01/30/2021 07:54
Wind Generation at Record Wind Penetration	22,091 MW

\*Sum of maximum capacity (i.e. seasonal max. reasonability limit in RARF) of all WGRs that are modeled in ERCOT's Network Operations Model and are commercially operable (estimated based on Commercial Operations Date in RARF).

\*\*Sum of maximum capacity (i.e. seasonal max reasonability limit in RARF) of all WGRs that are modeled in ERCOT's Network Operations Model.

Note that actual WGR Generation, WGR Record and WGR Capacity in following pages of this report are based on all Wind units modeled in ERCOT's Network Operations Model.

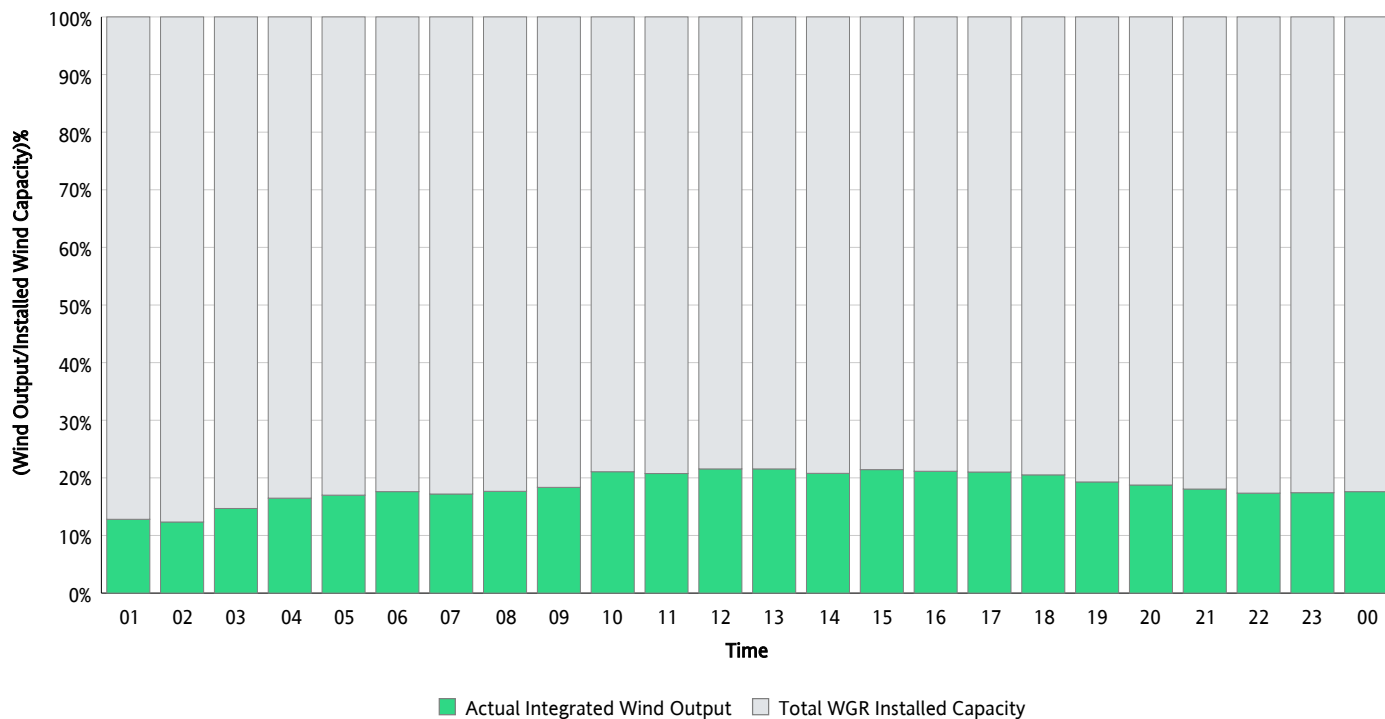
## Hourly Average Actual Load vs. Actual Wind Output 02/18/2021



*\* Wind Record and Wind Max represent instantaneous values and the rest of the values are integrated over the hour.  
Capacity numbers used in the graphs are based on the expected commercial operation date of each Wind Generation Resource.*

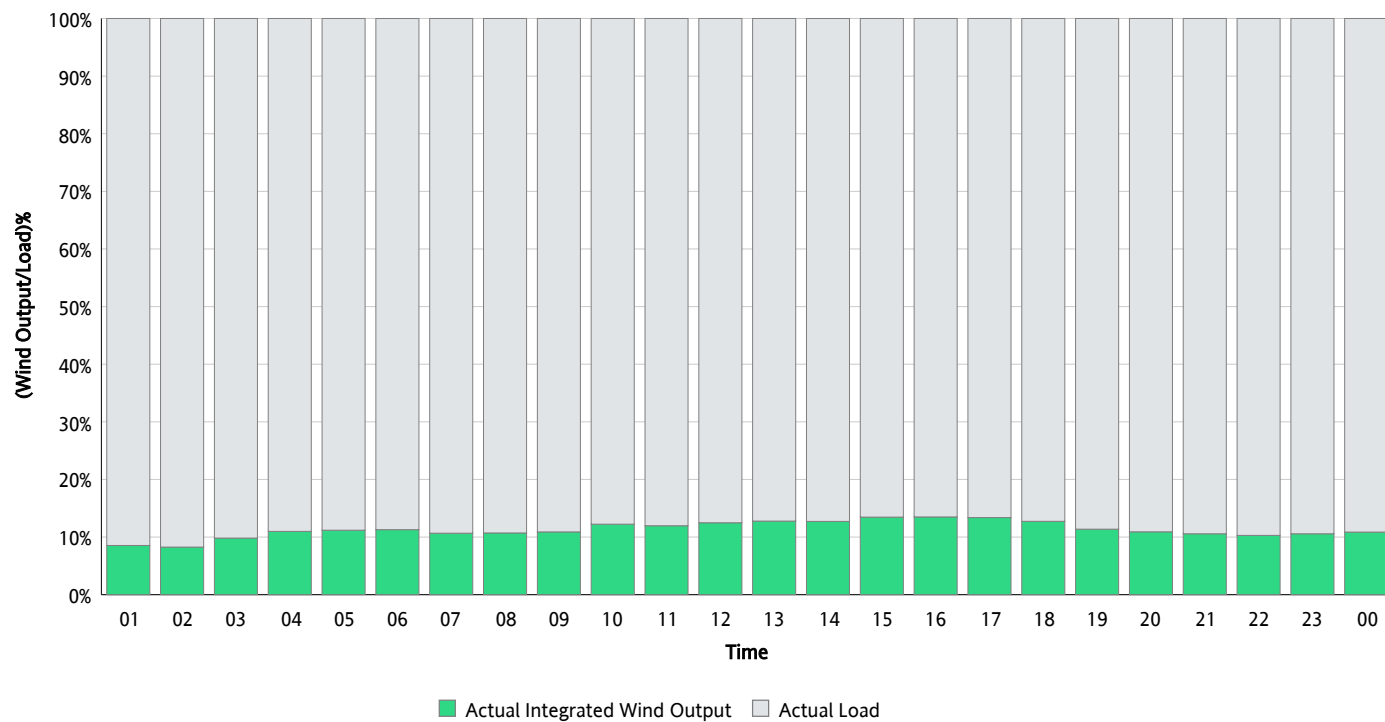
## Actual Wind Output as a Percentage of the Total Installed Wind Capacity

02/18/2021



## Actual Wind Output as a Percentage of the ERCOT Load

02/18/2021



## ERCOT Load vs. Actual Wind Output

02/11/2021 - 02/18/2021

