



ERCOT Grid Operations
Wind Integration Report : 01/09/2021

Current Daily Values:

Installed Wind Capacity*	31,781 MW
Total Wind Capacity**	31,858 MW
Peak Load	50,162 MW
Peak Load Hour (HE)	9
Wind at Peak Load Hour	3,907 MW

Max Wind	12,840 MW
Max Wind Time	23:15
Penetration at Max Wind Time	30.50 %

Max Wind Penetration	30.51 %
Max Wind Penetration Time	23:16
Wind Generation at Max Wind Penetration Time	12,802 MW

All Time Record Values:

Record Wind Generation	22,222 MW
Record Wind Generation Time	12/30/2020 11:22
Penetration at Record Wind Generation Time	52.97 %

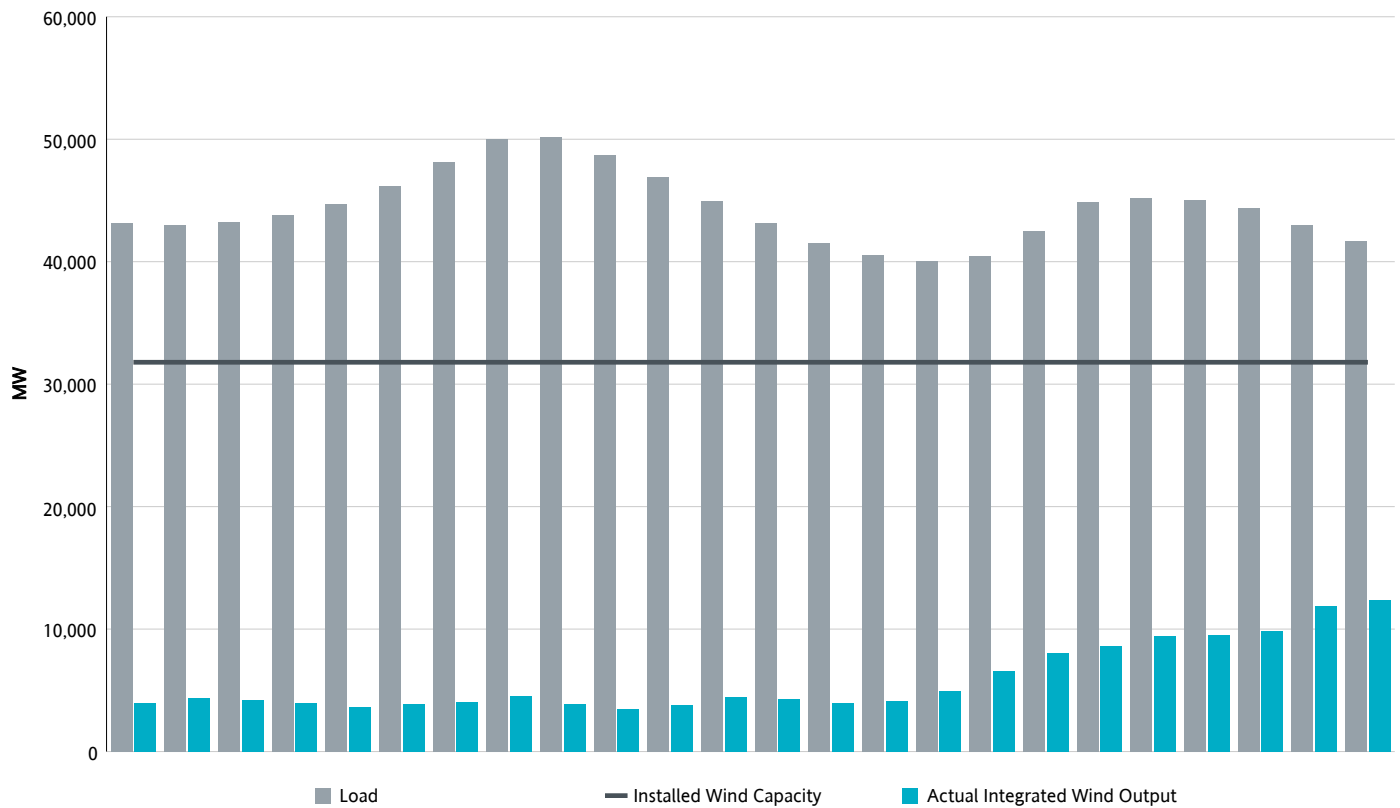
Record Wind Penetration	59.30 %
Record Wind Penetration Time	05/02/2020 02:10
Wind Generation at Record Wind Penetration	19,426 MW

*Sum of maximum capacity (i.e. seasonal max. reasonability limit in RARF) of all WGRs that are modeled in ERCOT's Network Operations Model and are commercially operable (estimated based on Commercial Operations Date in RARF).

**Sum of maximum capacity (i.e. seasonal max reasonability limit in RARF) of all WGRs that are modeled in ERCOT's Network Operations Model.

Note that actual WGR Generation, WGR Record and WGR Capacity in following pages of this report are based on all Wind units modeled in ERCOT's Network Operations Model.

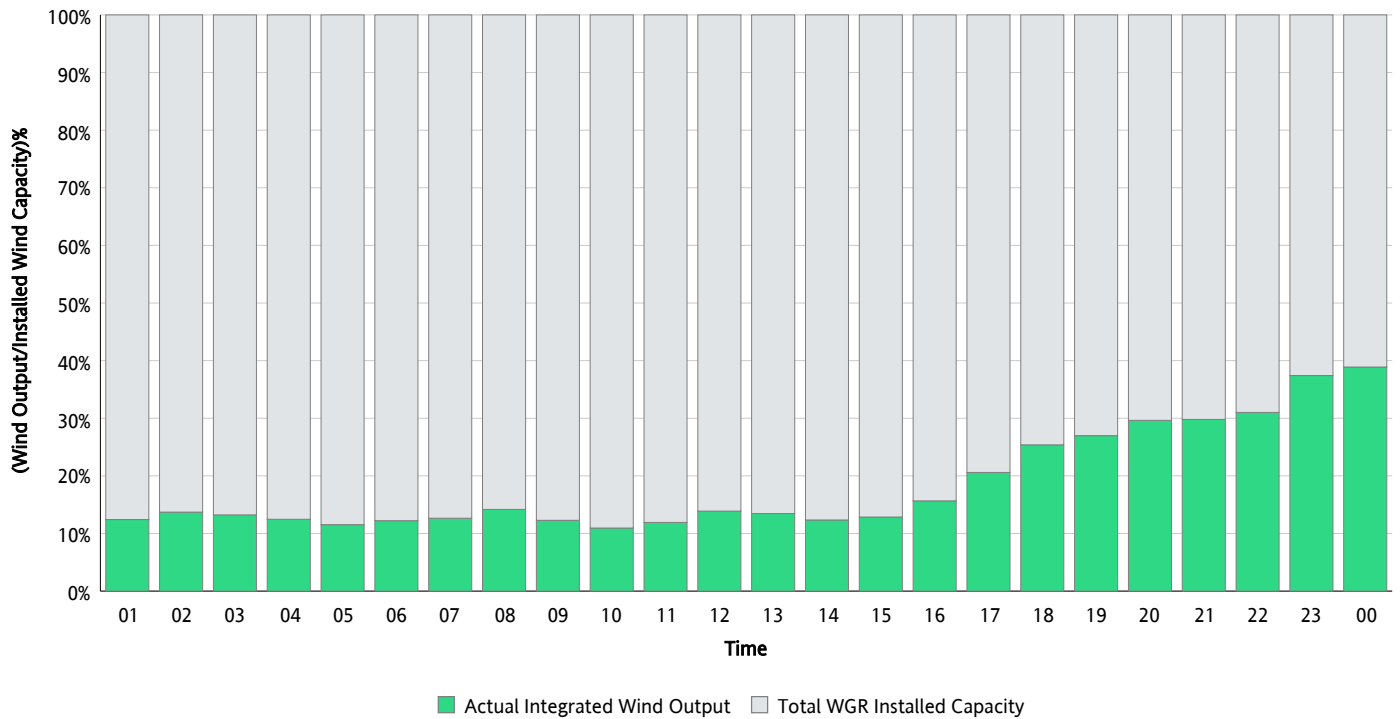
Hourly Average Actual Load vs. Actual Wind Output 01/09/2021



** Wind Record and Wind Max represent instantaneous values and the rest of the values are integrated over the hour.
Capacity numbers used in the graphs are based on the expected commercial operation date of each Wind Generation Resource.*

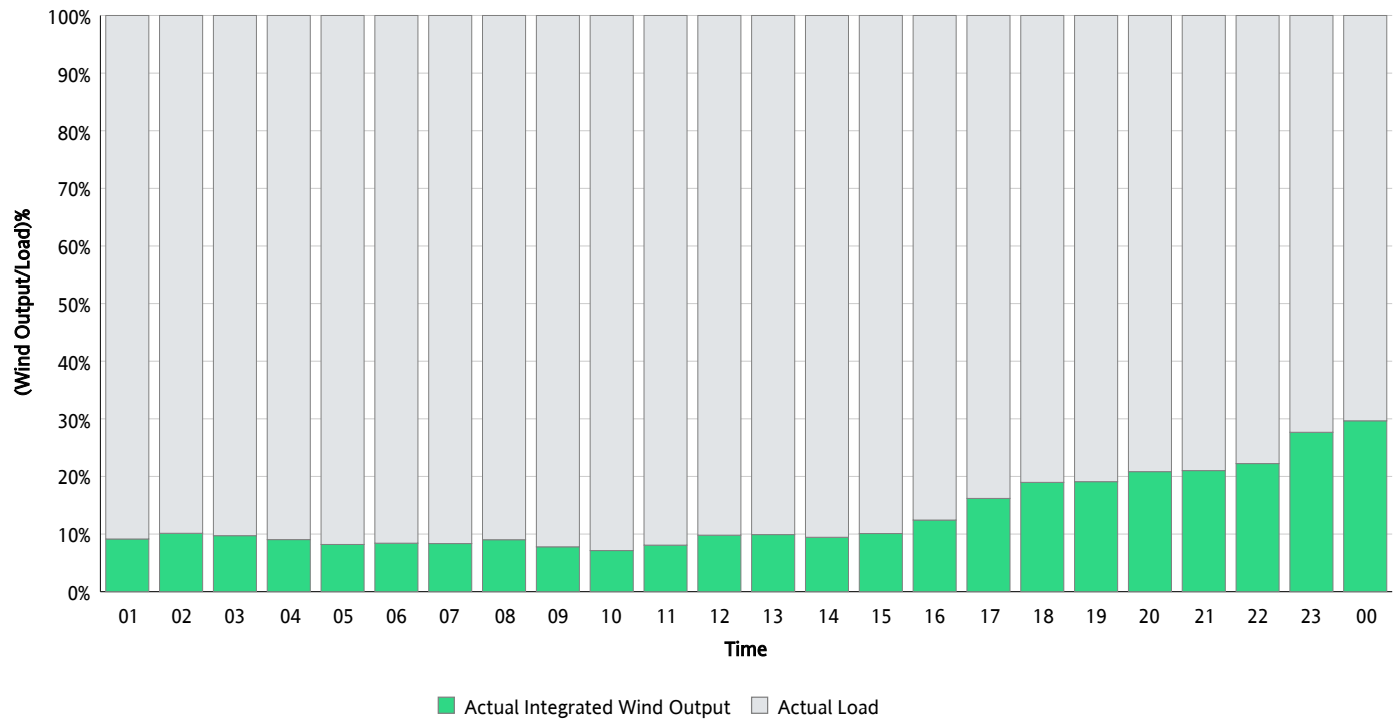
Actual Wind Output as a Percentage of the Total Installed Wind Capacity

01/09/2021



Actual Wind Output as a Percentage of the ERCOT Load

01/09/2021



ERCOT Load vs. Actual Wind Output

01/02/2021 - 01/09/2021

